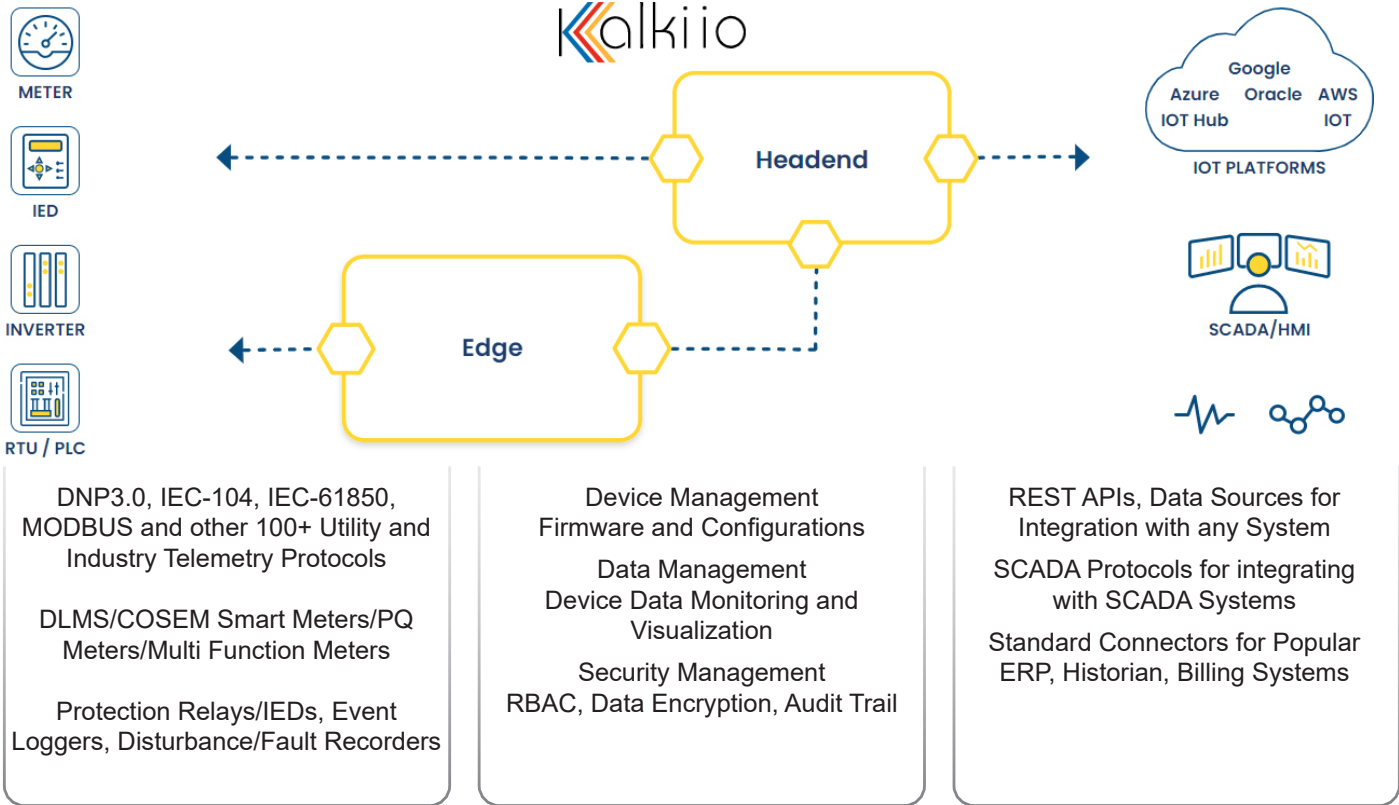


Accelerating Digital Transformation



KALKI.IO is an energy data acquisition software platform enabling field data acquisition for enhancing business intelligence, improving operational efficiency and providing systemwide visibility for businesses, industries and utilities. By aggregating data from field devices or software irrespective of the make/model of the system or communication protocol /interface supported. KALKI.IO creates a single secure data source accessible by third party applications for performing robust analytics. KALKI.IO supports many legacy and standards-based industry/utility protocols as well as new IoT protocols for field data acquisition and control.

KALKI.IO ENABLES

- Collection of asset data for early detection of performance issues and enables to detect system degradation
- Collection of operations data for business applications and analytics
- Remote configuration/firmware/identity/access management of field devices
- Highly scalable and secure data acquisition middleware

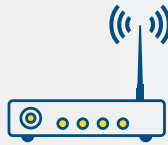
KALKI.IO HIGHLIGHTS

KALKI.IO provides a quick, easy and secure way for IT applications to access field data. The rich set of REST APIs & APP Connectors simplifies access to field device data alleviating the complexity of acquiring it. The rich set of industry protocols, utility protocols and IoT protocols supported by KALKI.IO makes it a unique choice for all your data acquisition needs beyond traditional SCADA systems. KALKI.IO has a number of standardized templates for specific field device data collection including ones for energy meters, protection relays/IEDs and other devices such as RTUs/PLCs/sensors, etc. These packages can communicate to multivendor devices over various types of communication media. KALKI.IO offers flexible pricing and deployment options which can be tailored to meet specific customer requirements.



Metering Headend

Cloud based meter data acquisition service for Industrial, Residential and Commercial establishments



Remote Device Maintenance

A secure remote device access and management service for your equipment and assets.



DER Headend

Remote Monitoring, management & Control of Industrial and Commercial DER Plants



Smart City

Metering and billing data application for Water/ Gas/ Electricity/ Wastewater and BTUs



LV Substation

Edge and Cloud based solution for Low voltage Electrical Grid Monitoring & Management

Public or private cloud service or on-premise infrastructure

Device connectivity directly from headend or through an the edge extension of the middleware

Wide range of Options available for Edge Gateway Hardware

Subscription and Perpetual licensing options

KALKI.IO SaaS DEPLOYMENT VARIANTS

Neon

- Highly secure multi-tenant variant, hosted on public cloud
- Most economical – low maintenance and subscription fees



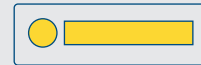
Argon

- Deployed on fully dedicated cloud infrastructure with single tenant access
- More suitable for medium to large size deployments which need dedicated maintenance and support



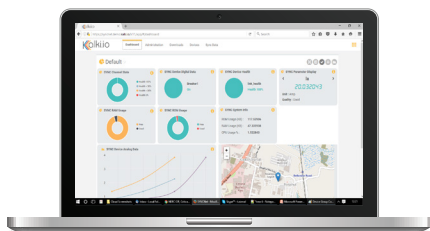
Krypton

- Deployed user's on-premise infrastructure or private cloud accounts
- More suitable for organization having in house IT proficiency

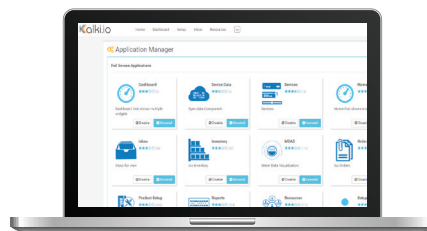


Xenon

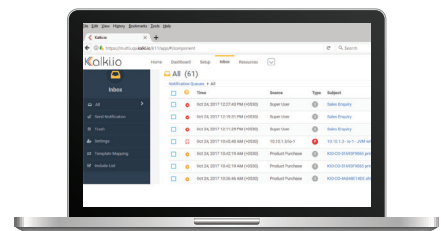
- Server appliance pre-installed with KALKI.IO for on-premises use
- Quick deployment and no changes to existing IT infrastructure
- Ease in scaling by adding appliances



Dashboard

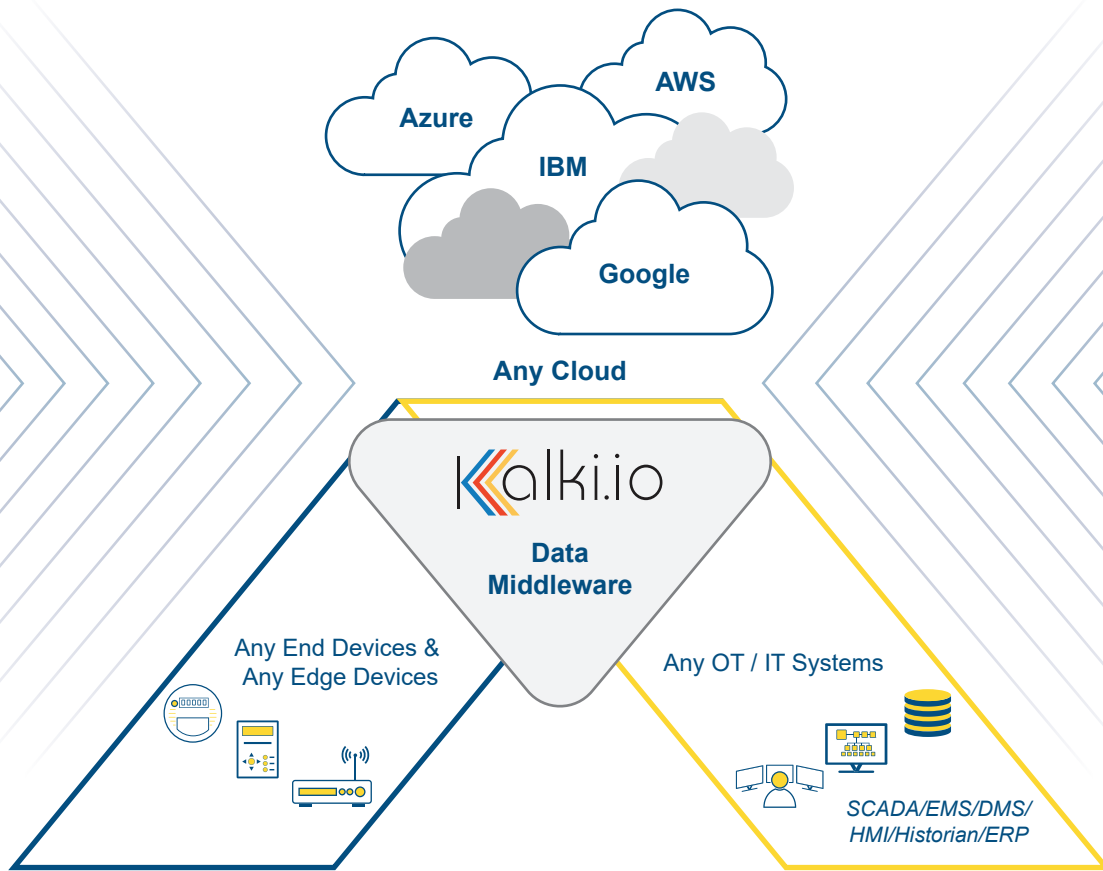


Application Manager



Components

DATA ACQUISITION MIDDLEWARE



DATA COLLECTION TECHNIQUES

KALKI.IO Enables flexible options for collection of data from field.

KALKI.IO HEADEND NATIVE ADAPTORS

KALKI.IO native protocol adapters enables data collection from field devices directly. Inbound and outbound connectivity support simplifies the connection management with field devices. Devices connected on private or public network with IPv6 or IPv4 support can be directly connected with the system.

Protocol Supported

KALKI.IO EDGE

KALKI.IO edge software (SyncConnect) deployable on commercial off-the-shelf hardware supports a wide range of industrial and utility protocols. It can communicate with field devices locally from the edge and forward data to headend over a secure web-socket tunnel. Supported off-the-shelf edge gateway hardware platforms are listed web page.

Edge Software

Check out our website at
KALKI.IO